



Patti's Scarf

Karen Wessel

Patti's Scarf

Karen Wessel

Size:

Approx. 170 x 20 cm (67 x 8 in), the length is easily adjustable by adding pattern repeats.

Yarn:

Approx. 550 - 600 m (600 - 660 yds) sock yarn (fingering, 4-ply). The blue scarf uses 140g (5 oz) Regia 4-ply (75% wool, 25% nylon; 210m/50g; colour 1980) and measures 174 x 21 cm (24 repeats).

The red scarf uses 160g (5.6 oz) Wollmeise 100% Merino Superwash (526m/150g; colour Orient) and measures 156 x 20 cm (22 repeats).

Needles:

One pair of 3.5mm (US size 4) straight needles

Notions:

Tapestry needle for grafting the pieces together, waste yarn for the first half of the scarf, stitch markers

Gauge:

21 stitches and 30 rows over the cable pattern for 10cm (4 in) square.

Notes:

The scarf is knitted in two halves, which are then grafted together to create a symmetrical scarf. If using one ball of yarn, split the yarn into two equal halves before starting.

On even rows, knit all knit stitches and purl all purl stitches unless stated otherwise.

Cables:

C6F: slip 3 stitches to cable needle and hold in front, k3 stitches, k3 stitches from cable needle

Cross 6 left: place 2 sts on a cable needle and hold in front of work, place following 2 sts on a 2nd cable needle and hold in back of work, k following 2 sts, then k 2 sts from 2nd cable needle, then k2 sts from 1st cable needle.

Abbreviations:

k: knit

p: purl

k2tog: knit 2 stitches together

yo: yarn-over

k tbl: knit through the back loop

p2tog: purl 2 together

R: row

ssk: slip 2 stitches knitwise, then knit both stitches together through the back loop

Cast on and Edging:

Using a stretchy method of your choice, Cast on 65 stitches.



This design is copyright Karen Wessel 2011.

This pattern is for personal use and charitable donation only. Please do not reproduce, distribute or makes items for sale without the express written permission of the copyright owner.

For comments and errata please contact me at quesselchen@yahoo.co.uk or visit my website at <http://www.quesselchen.com>. You can find me on Ravelry as [quesselchen](#).

Edging pattern (Chart A):

Row 1 (RS): sl1, k64

R2 (WS): sl1, k to end

R3: sl1, k11, p2, k6, p2, k21, p2, k6, p2, k12

R4 and all foll WS rows: sl1, knit the knits and purl the purls, k last stitch.

R5: sl1, [k tbl, p2] 3x, k tbl, yo, p3, C6F, p3, yo, [k tbl, p2] 6x, k tbl, yo, p3, C6F, p3, yo, [k tbl, p2] 3x, k tbl, k (71 sts)

R7: sl1, [k tbl, p2] 3x, k tbl, yo, p4, k6, p4, yo, [k tbl, p2] 6x, k tbl, yo, p4, k6, p4, yo, [k tbl, p2] 3x, k tbl, k (75 sts)

R9: sl1, [k tbl, p2] 3x, k tbl, yo, p5, C6F, p5, yo, [k tbl, p2] 6x, k tbl, yo, p5, C6F, p5, yo, [k tbl, p2] 3x, k tbl, k (78 sts)

R11: sl1, [k tbl, p2tog] 3x, k tbl, yo, p6, k6, p6, yo, [k tbl, p2tog] 6x, k tbl, yo, p6, k6, p6, yo, k tbl, [p2tog, k tbl] 3x, k (71 sts)

R13: sl1, [k tbl, p1] 3x, k tbl, yo, p4, k1, p2, C6F, p2, k1, p4, yo, [k tbl, p1] 6x, k tbl, yo, p4, k1, p2, C6F left, p2, k1, p4, yo, [k tbl, p1] 3x, k tbl, k (75 sts)

R15: sl1, [ssk] 3x, k1, yo, p4, k2, p2, k6, p2, k2, p4, yo, [ssk] 6x, k1, yo, p4, k2, p2, k6, p2, k2, p4, yo, [ssk] 3x, k2 (67 sts)

R17: sl1, k4, yo, p4, k3, p2, C6F, p2, k3, p4, yo, k7, yo, p4, k3, p2, C6F, p2, k3, p4, yo, k5 (71 sts)

R18: As row 4.



This design is copyright Karen Wessel 2011.

This pattern is for personal use and charitable donation only. Please do not reproduce, distribute or makes items for sale without the express written permission of the copyright owner.

For comments and errata please contact me at quesselchen@yahoo.co.uk or visit my website at <http://www.quesselchen.com>. You can find me on Ravelry as quesselchen.

Scarf pattern (Chart B, the pattern repeat is boxed in red in the chart):

R1: sl1, k1, [p2, k2, yo, ssk, p2, k3, p2, k2, yo, ssk, k2, p2, k3, p2, k2tog, yo, k2, p2, k1] twice, k1

R2 and all foll WS rows: sl1, knit the knits and purl the purls, k the last stitch.

R3: sl1, k1, [p2, k2tog, yo, k2, p2, k3, p2, cross 6 left, p2, k3, p2, k2, yo, ssk, p2, k1] twice, k1

R5: sl1, k1, [p2, k2, yo, ssk, p2, k3, p2, k2, k2tog, yo, k2, p2, k3, p2, k2tog, yo, k2, p2, k1] twice, k1

R7: sl1, k1, [p2, k2tog, yo, k2, p2, k3, p2, k2, yo, ssk, k2, p2, k3, p2, k2, yo, ssk, p2, k1] twice, k1

R9: sl1, k1, [p2, k2, yo, ssk, p2, k3, p2, k2, k2tog, yo, k2, p2, k3, p2, k2tog, yo, k2, p2, k1] twice, k1

R11: sl1, k1, [p2, k2tog, yo, k2, p2, k3, p2, k2, yo, ssk, k2, p2, k3, p2, k2, yo, ssk, p2, k1] twice, k1

R13: sl1, k1, [p2, k2, yo, ssk, p2, k3, p2, cross 6 left, p2, k3, p2, k2tog, yo, k2, p2, k1] twice, k1

R15: sl1, k1, [p2, k2tog, yo, k2, p2, k3, p2, k2, k2tog, yo, k2, p2, k3, p2, k2, yo, ssk, p2, k1] twice, k1

R17: sl1, k1, [p2, k2, yo, ssk, p2, k3, p2, k2, yo, ssk, k2, p2, k3, p2, k2tog, yo, k2, p2, k1] twice, k1

R19: sl1, k1, [p2, k2tog, yo, k2, p2, k3, p2, k2, k2tog, yo, k2, p2, k3, p2, k2, yo, ssk, p2, k1] twice, k1

R20: As row 2.

Repeat these 20 rows 11 times or until you run out of your first half of yarn, make sure to end with a row 19; put all stitches on a stitch holder. Make second half alike. Graft both halves together using kitchener stitch.

Finishing:

Carefully weave in all ends, I recommend using duplicate stitches along the knit stitch before the edge.

Make sure to stretch out the lace and cable panels during blocking, I recommend wet-blocking and pinning the shawl out.

This design is copyright Karen Wessel 2011.

This pattern is for personal use and charitable donation only. Please do not reproduce, distribute or makes items for sale without the express written permission of the copyright owner.

For comments and errata please contact me at quesselchen@yahoo.co.uk or visit my website at <http://www.quesselchen.com>. You can find me on Ravelry as [quesselchen](#).

Chart A (Edging Pattern)

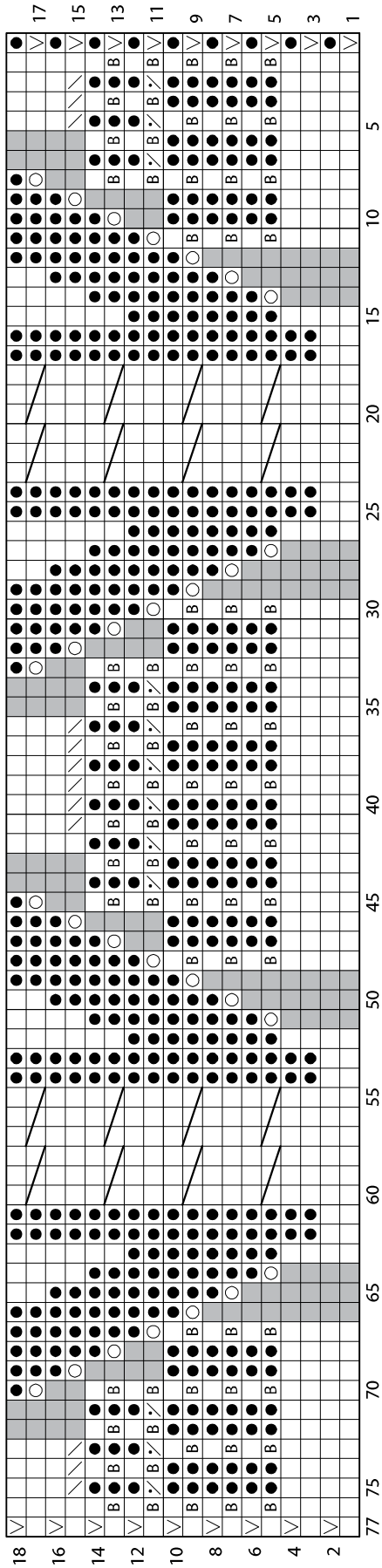
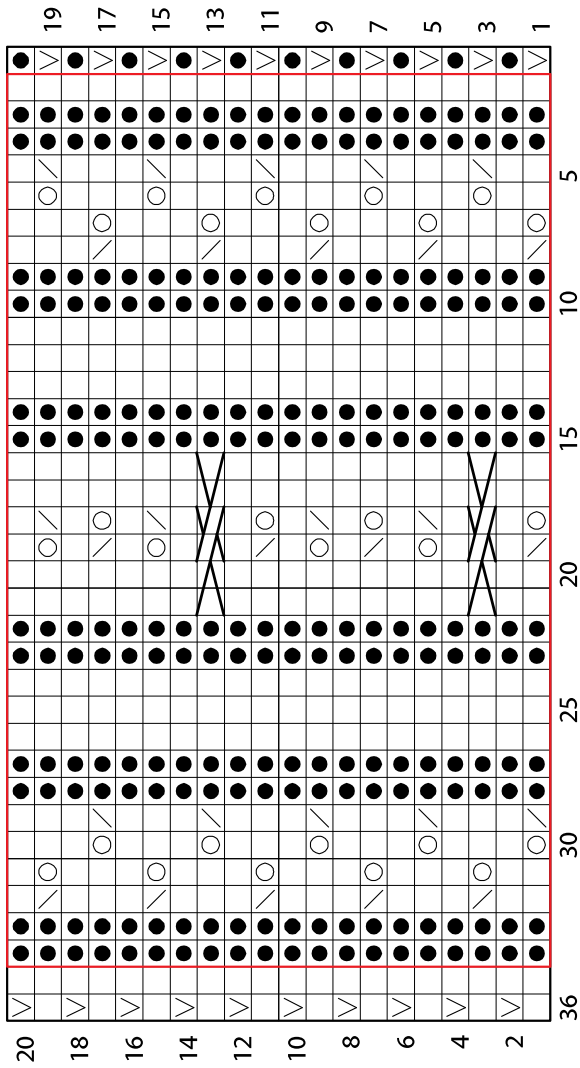


Chart B (Main Pattern)



- Key
- Knit on RS, Purl on WS
 - Purl on RS, Knit on WS
 - SSK on RS
 - K2tog on RS
 - P2tog on RS
 - K1 tbl on RS
 - Yarnover
 - No stitch, ignore these squares and move straight to next knitting instruction
 - SI1
 - C6F
 - Cross 6 left
 - Pattern repeat

This design is copyright Karen Wessel 2011.
 This pattern is for personal use and charitable donation only. Please do not reproduce, distribute or makes items for sale without the express written permission of the copyright owner.
 For comments and errata please contact me at quesselchen@yahoo.co.uk or visit my website at <http://www.quesselchen.com>. You can find me on Ravelry as quesselchen.