



### Jane's Ubiquitous Shawl

- Berroco Ultra Alpaca Light; 14 WPI; charcoal; 9 skeins
- 1 set US #7/4.5mm DPN; 1 24-inch+ US #7/4.5mm circular needle



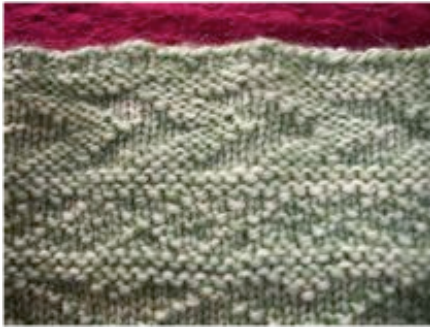
### Princess Langwidere cowl

- Alice Sock Yarn 15WPI, Olive [175A] 1 skein
- Crystal Palace Yarns Kid Merino, 18WPI, Green [5448];
- 2 sets 16 inch US #3/3.25mm



### Not-So-Ruby Slippers

- Cascade 220 Superwash, 9 wpi; color: 1946, 1 skein
- Cascade Fixation, 11 wpi; color: 3611, 1-2 skeins
- 1 US G/4.5mm crochet hook



### Isolde socks

- The March Hare sock yarn, 18 WPI; color: Isolde; 1-2 skeins
- 1 set each US 2/2.75mm and US 1/2.25mm DPN



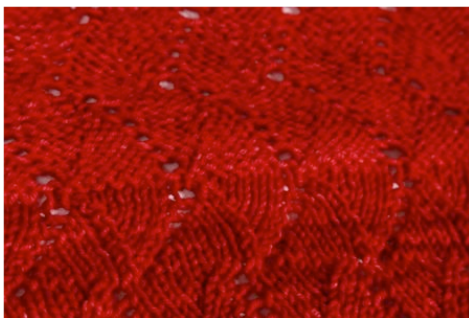
### Tristan socks

- The March Hare sock yarn, 18 WPI; color: Tristan; 1-2 skeins
- 1 set US 1/2.25mm DPN



### Van Tassel mittens

- The March Hare sock yarn, 18 WPI; color: Victoria's Ballgown and Sterling, 1 skein each
- 1 set US 1/2.25mm DPN



### Bertha's Mad Möbius

- Malabrigo Yarns Sock, 19.5WPI; color: Ravelry Red; one skein
- 1 US size 6/4mm 47" circular needle



### Hyde's Hooded Sweater

- Abundance, Briar Rose Fibers; 9 WIP
- 1 set US #8/5mm DPN
- 1- 32inch US #8/5mm circ
- 1- 16inch US #8/5mm circ



### Frankenhood

- Cascade 220, 10 WPI; Green (#1975), Black (#1752)
- Grand Opera by Nashua Handknits, 14 WPI; Silver (#NGO.4921), 1 ball
- 1 set each US #6 & 7 DPNs



### Mermaid's Lagoon

• This is a special addition to the book—instructions and templates for making delicate Peter Pan shadow puppets.



### Colour Revolt Shawl

- 1-2 skeins of Noro Kureyon Sock yarn, 14 wpi; colors are noted for each version in pattern
- US H/8 5.00mm hook



### Cthulhu Waits socks

- Briar Rose Fibers, Grandma's Blessing
- 1 set US 1 or needles needed to attain preferred size



### The White Wool scarf

- Fibranatura Shepherd's Own, color: Natural; 2 skeins
- 1 US #7/4.5mm straight or circular



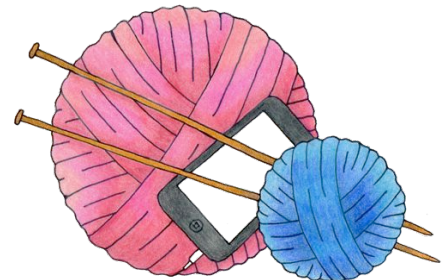
### Ancient Mariner Watch Cap

- Drops Karisma Superwash Wool: Grey #21 2 skeins; black # 53; 1 skein; US 4/3.5mm double-point needles or 2 US 4/3.5mm circular needles

## *What Would Madame Defarge Knit?*

A new book of patterns based on characters from classic fiction.

This book is soon-to-be-released and is currently available as a pre-order at <http://wwmdfk.com>





### Monkey Minions

- Lion Brand Nature's Ch. Org Ctn, 8wpi; walnut, almond
- Lion Brand Cotton Ease, 9 wpi; Maize
- 5.00 mm crochet hook (US H)



### Wolf Slayer hood

- Briar Rose Fibers Robusta, 7wpi; color: reds; 1 skein
- 8.00 mm crochet hook (US L)



### Glacial Gauntlets

- Knit Picks Bare, 13 WPI; color: natural; 1 skein re-wrapped into smaller (.5 oz, 10g) skeins for dyeing.
- 1 set(s) US #3/3.25 mm DPN



### Ms Prynne cowl

- The March Hare Wool-Silk Fingering, 13 WPI; color: The Scarlet Letter; 1 skein
- 1 set US #9/5.5mm 16 inch or 24 inch circular needles



### Whilhelmina shawl

- Serendipitous Ewe Fate fingering, 12wpi; Autumn Glow; 1 skein
- 1 US #4/3.5mm circular needle



### Madame Defarge stole

- Schoppel-Wolle Zauberball color: plum sauce #1872; 2 balls (a little over 1000 yards used, total); 23 WPI
- 1 US #5/3.75mm circular



### Lysistrata's Chiton

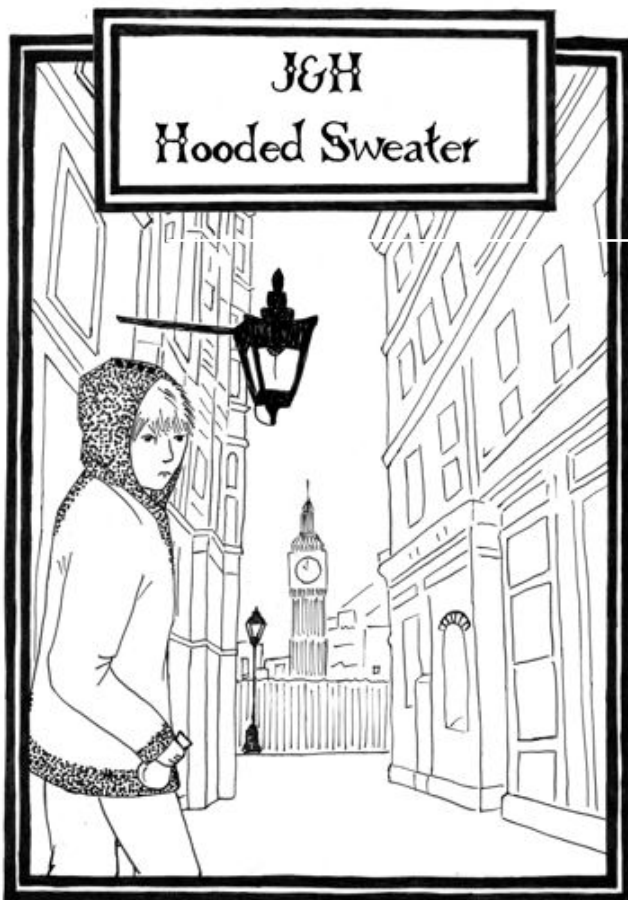
- 3 skeins Briar Rose "Wistful" 13 WPI
- One set of 5mm straight or circular needles



### Jane Fairfax's Tippet

- Bijou Basin Ranch Bijou Bliss, 16 WPI, 1 skein
- US 10 [6mm] needles





by  
Gretchen Funk



### *What Would Madame Defarge Knit?*

A new book of patterns based on characters from classic fiction.

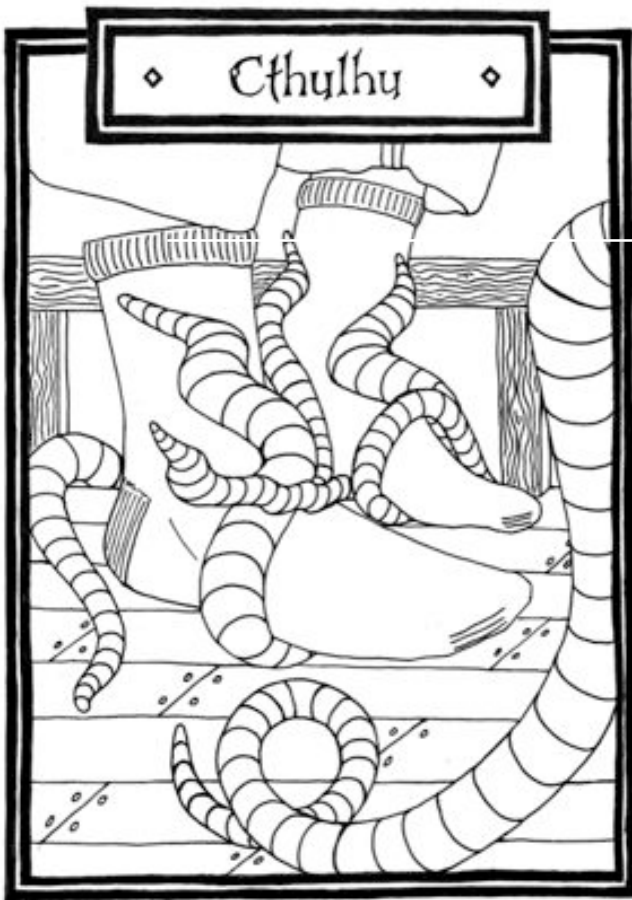
This book is soon-to-be-released and is currently available as a pre-order at <http://wwmdfk.com>

### Materials

- Abundance, Briar Rose Fibers, color: deep dark muted blues, grays; 9 WIP

- 1 set US #8/5mm DPN
- 1- 32inch US #8/5mm circular needle
- 1- 16inch US #8/5mm circular needle





by  
Hunter  
Hammersen



### *What Would Madame Defarge Knit?*

A new book of patterns based on characters from classic fiction.

This book is soon-to-be-released and is currently available as a pre-order at <http://wwmdfk.com>

### Materials

- Briar Rose Fibers, Grandma's Blessing
- 1 set US 1 or needles needed to attain preferred size (notes on sizing adjustments on pattern)



◊ Wolf-Slayer ◊



by  
Dawn  
Ellerd



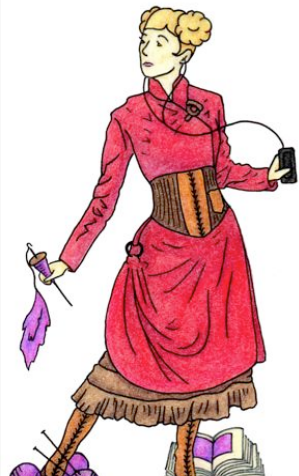
*What Would  
Madame Defarge Knit?*

A new book of patterns  
based on characters from  
classic fiction.

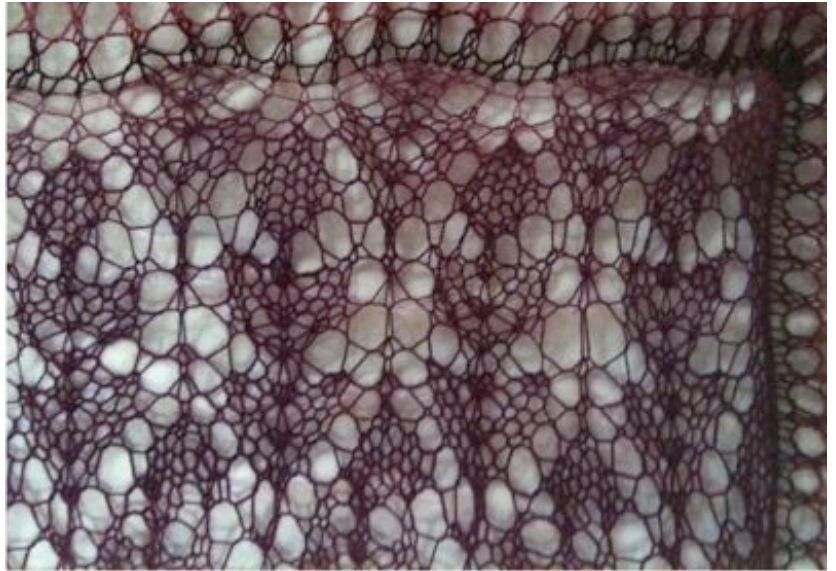
This book is soon-to-be-  
released and is currently  
available as a pre-order at  
<http://wwmdfk.com>

Materials

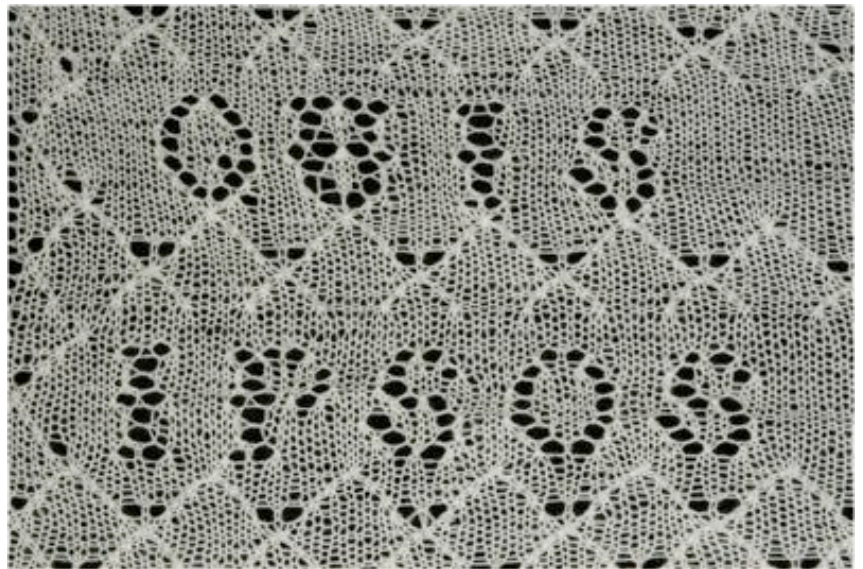
- Briar Rose Fibers Robusta,  
7wpi; color: reds; 1 skein
- 8.00 mm crochet hook (US L)
- 15 10mm metal beads



## Madame Defarge's Stole



by  
Heather Ordovery



### *What Would Madame Defarge Knit?*

A new book of patterns based on characters from classic fiction.

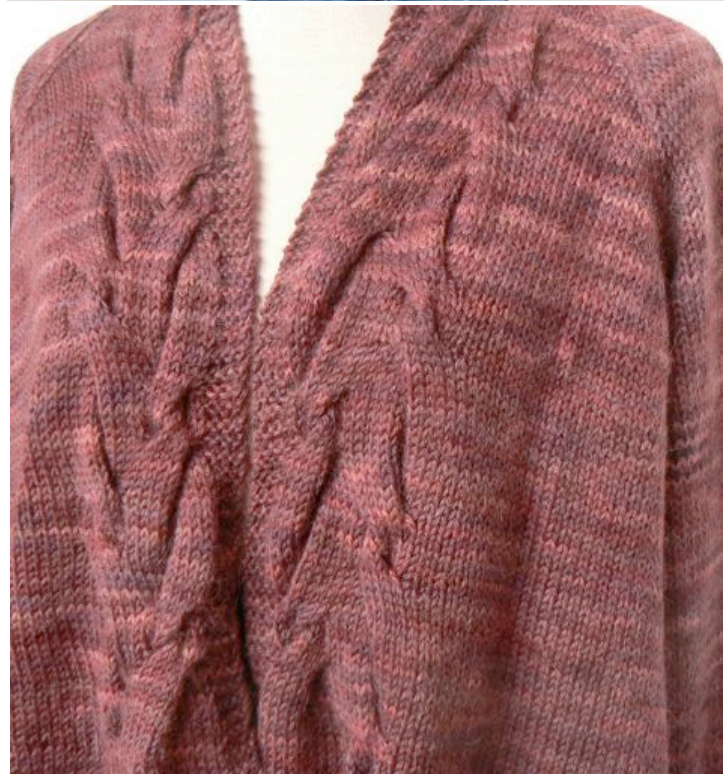
This book is soon-to-be-released and is currently available as a pre-order at <http://wwmdfk.com>

### Materials

- Schoppel-Wolle Zauberball color: plum sauce #1872; 2 balls (a little over 1000 yards used, total); 23 WPI
- 1 US #5/3.75mm circular needle, 40-60" length



◆ Lysistrata ◆



by  
Brenda  
Dayne

*What Would  
Madame Defarge Knit?*

A new book of patterns  
based on characters from  
classic fiction.

This book is soon-to-be-  
released and is currently  
available as a pre-order at  
<http://wwmdfk.com>

Materials

- 3 skeins Briar Rose “Wistful”  
13 WPI
- One set of 5mm straight or  
circular needles

